



Al Alwan Villa

ROOF FLOOR

Table of Contents

Cover	1
Table of Contents	2
Images	3

Product data sheets

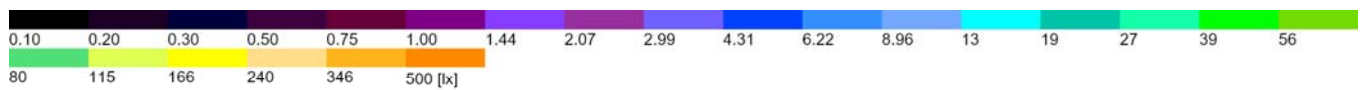
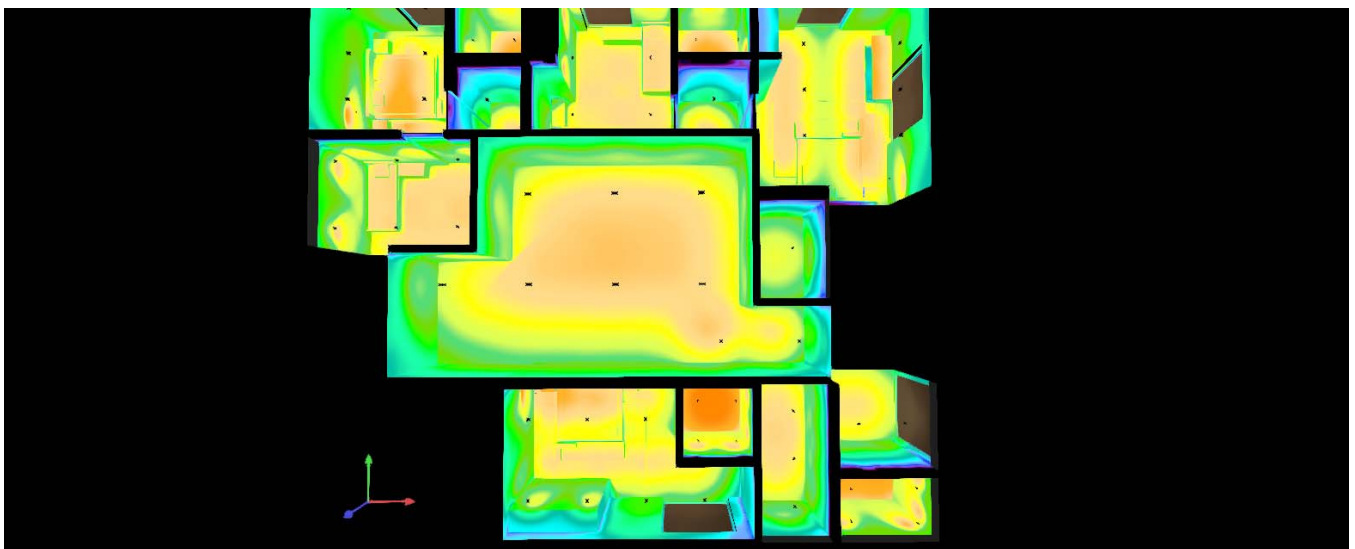
NEKO - LED-Downlight (1x TAKEO T75 13W-3000K WW 50°)	8
NEKO - LED-Lamps (1x LED CLLE 8W-3000K/120°)	9
NEKO - LED-Multiple DownLight (1x TSA1D 15W BB 3000K 60°, 1x TSA1D 15W BB 3000K 60°)	10
NEKO - LED-SpotLight (1x CLUB TSA3 M3 13W 35°3000K BBM)	11
NEKO - LED-SpotLight (1x MINUX 44 WC 11W 40°3000K)	12

Jellyfish Al Alwan Villa - Building 1 - ROOF FLOOR

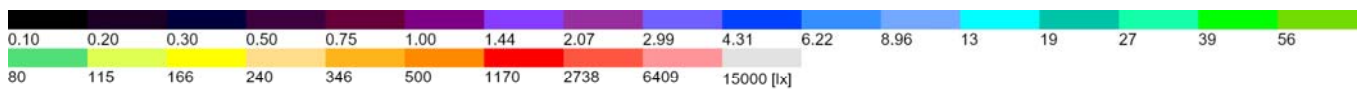
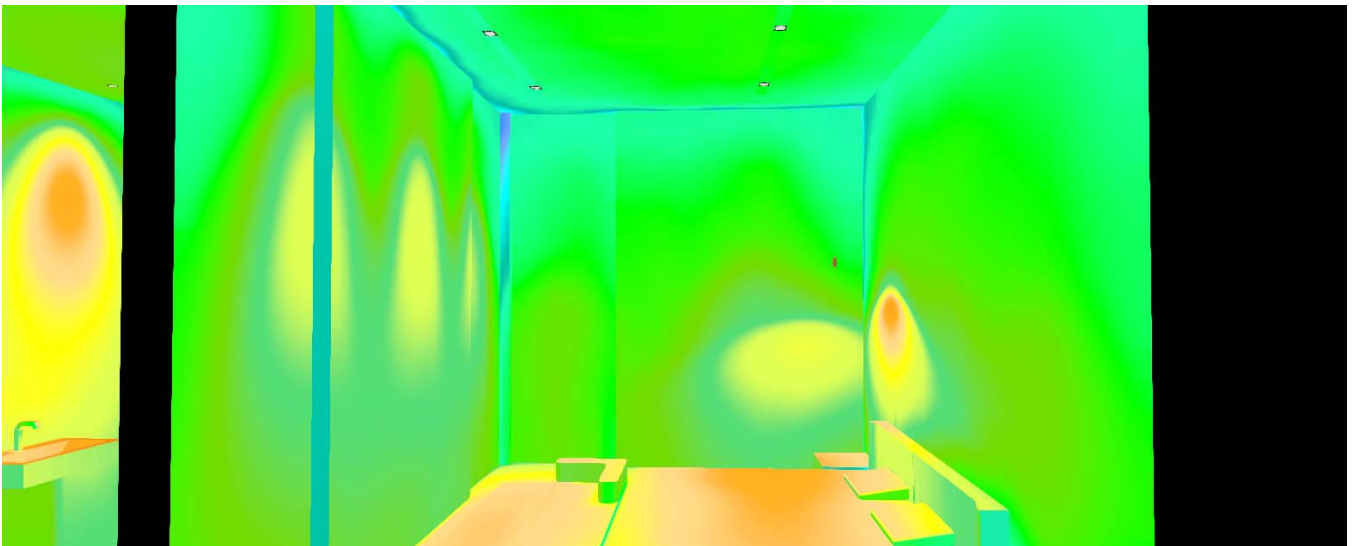
Room 1

Summary / Light scene 1	13
Calculation objects / Light scene 1	15
SUITE 01 / Light scene 1 / Perpendicular illuminance	17
SUITE 02 / Light scene 1 / Perpendicular illuminance	18
STORAGE / Light scene 1 / Perpendicular illuminance	19
SUITE 03 / Light scene 1 / Perpendicular illuminance	20
LOUNGE / Light scene 1 / Perpendicular illuminance	21
Bedroom 01 / Light scene 1 / Perpendicular illuminance	22
Bedroom 02 / Light scene 1 / Perpendicular illuminance	23

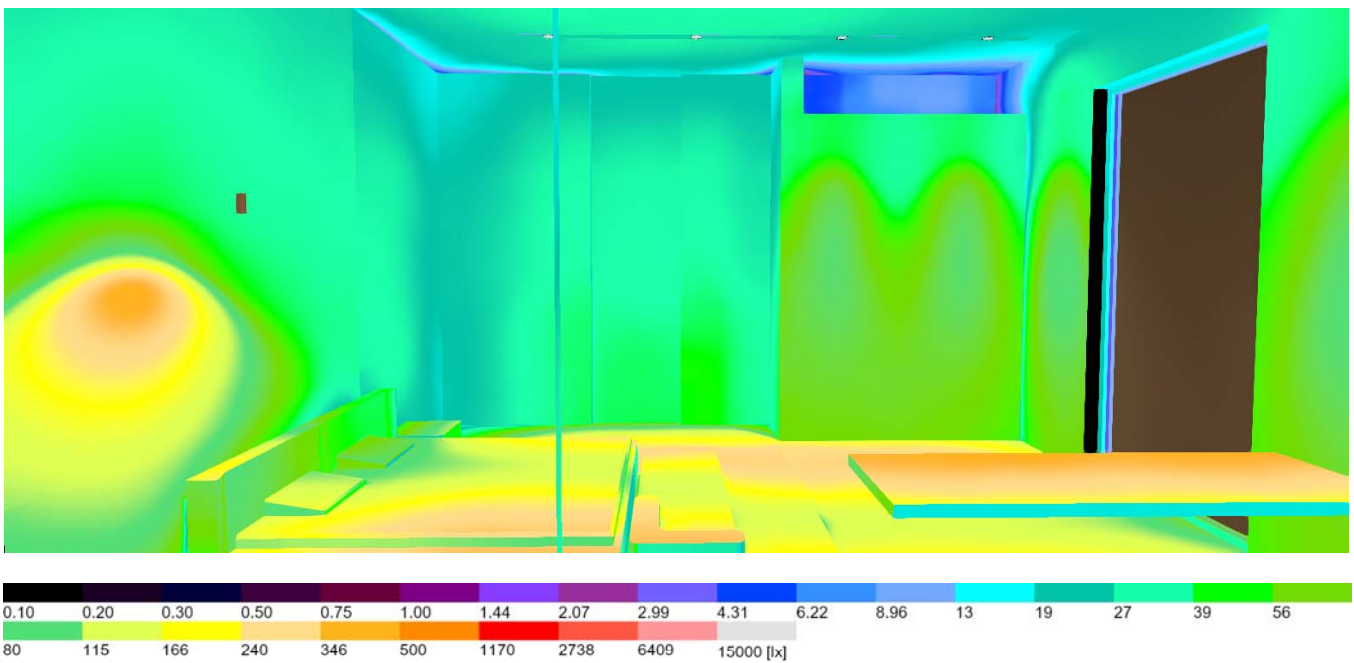
Images



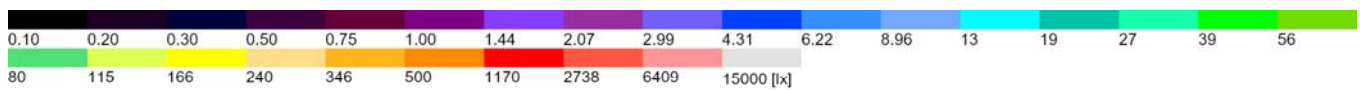
Images



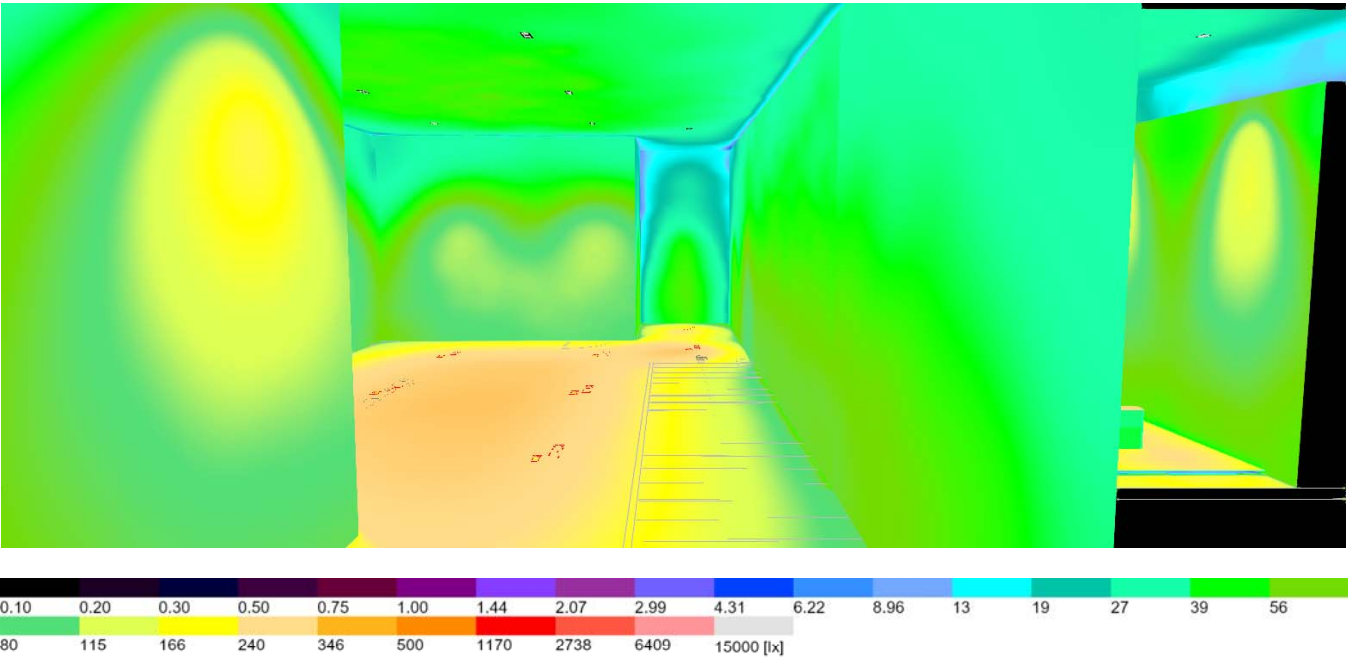
Images



Images



Images

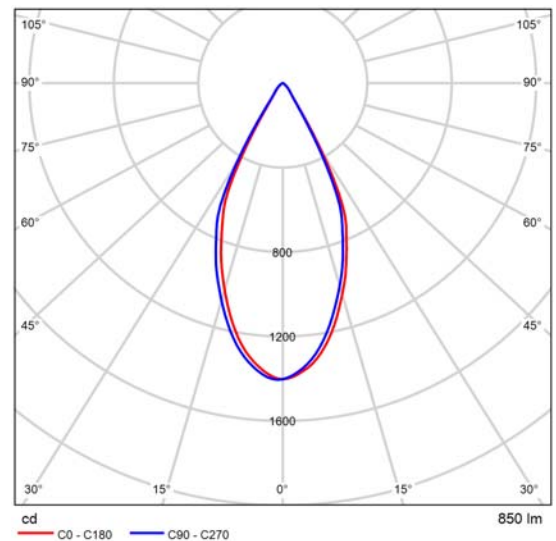


Product data sheet

NEKO - LED-Downlight



Article No.	TAKEO T75 13W-3000K WW 50° 850lm
P	13.0 W
$\Phi_{\text{Luminaire}}$	850 lm
Luminous efficacy	65.4 lm/W
CCT	3000 K
CRI	90



Polar LDC

Specification

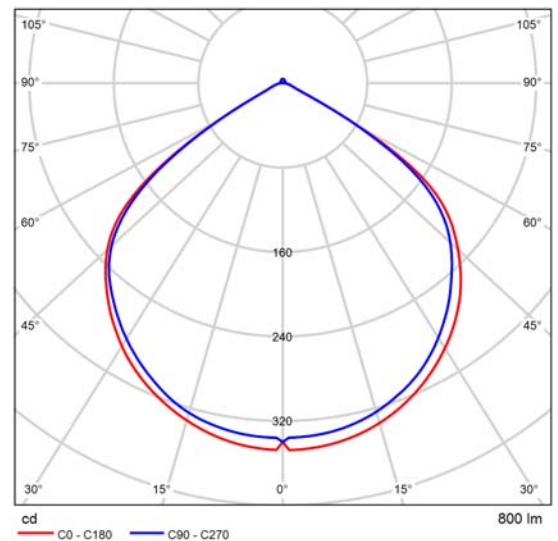
Product data sheet

NEKO - LED-Lamps



Article No.	LED CLLE 8W-3000K/120°
P	8.0 W
$\Phi_{\text{Luminaire}}$	800 lm
Luminous efficacy	100.0 lm/W
CCT	3000 K
CRI	90

Description



Polar LDC

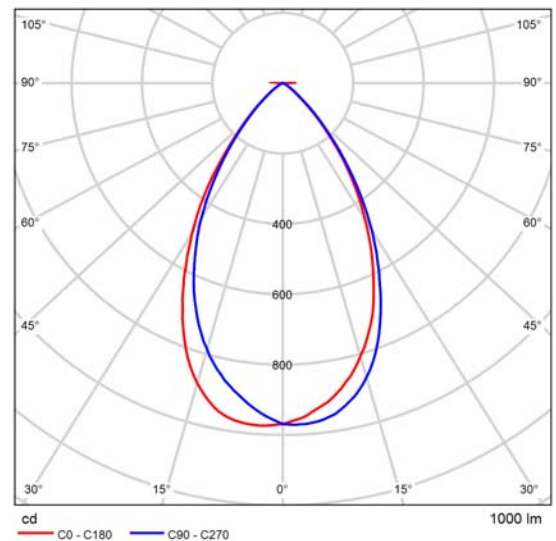
Product data sheet

NEKO - LED-Multiple DownLight



Article No.	TSA1D 2×15W BB 3000K 60°
P	30.0 W
$\Phi_{\text{Luminaire}}$	2000 lm
Luminous efficacy	66.7 lm/W
CCT	3000 K
CRI	90

Specification



Polar LDC for Light emission 1 and 2

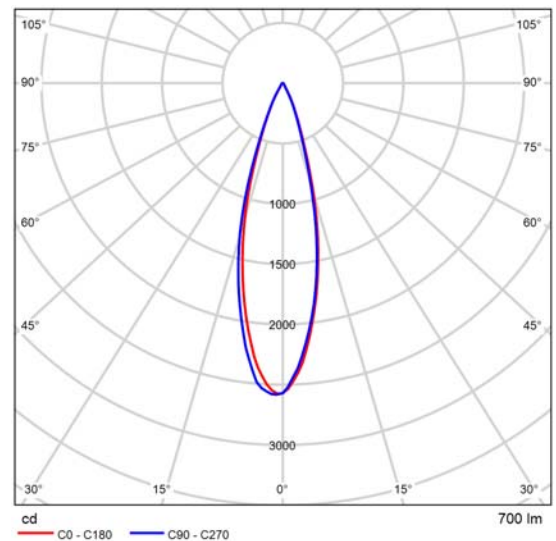
Product data sheet

NEKO - LED-SpotLight



Article No.	CLUB TSA3 M3 13W 35°3000K BBM
P	13.0 W
$\Phi_{\text{Luminaire}}$	700 lm
Luminous efficacy	53.8 lm/W
CCT	3000 K
CRI	90

Description



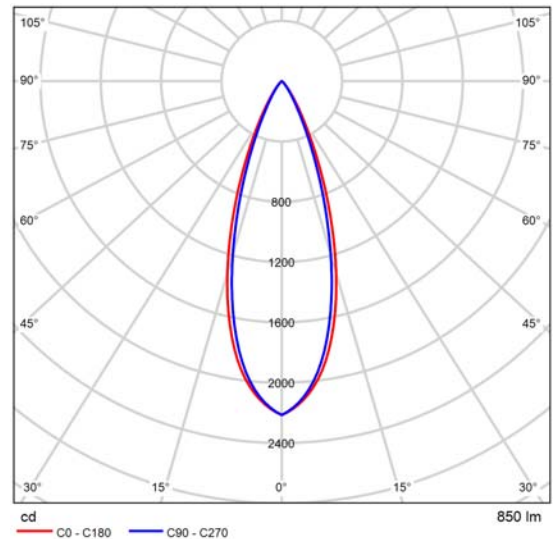
Polar LDC

Product data sheet

NEKO - LED-SpotLight

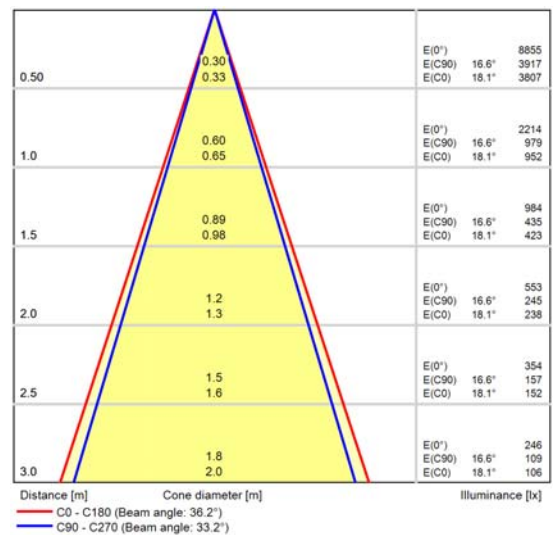


Article No.	MINUX 44 WC 11W 40°3000K
P	11.0 W
Φ _{Luminaire}	850 lm
Luminous efficacy	77.3 lm/W
CCT	3000 K
CRI	90



Polar LDC

Description



Cone diagram

Building 1 (Light scene 1)

Summary



Ground area	194.10 m ²		
Reflection factors	Ceiling: 69.6 %, Walls: 50.0 %, Floor: 20.0 %	Clearance height	3.000 m – 3.500 m
Maintenance factor	0.80 (fixed)	Mounting height	2.000 m – 3.574 m

Building 1 (Light scene 1)

Summary

Results

	Symbol	Calculated	Target	Check	Index
Glare valuation ⁽¹⁾	R _{UG, max}	16	≤ 19	✓	
Energy estimation ⁽²⁾	Consumption	[1476.87 - 2343.82] kWh/a	max. 6800 kWh/a	✓	
Room	Lighting power density	4.88 W/m ²	–		

(1) Based on a rectangular space of 14.652 m x 16.201 m and SHR of 0.25.

(2) Calculated using DIN:18599-4.

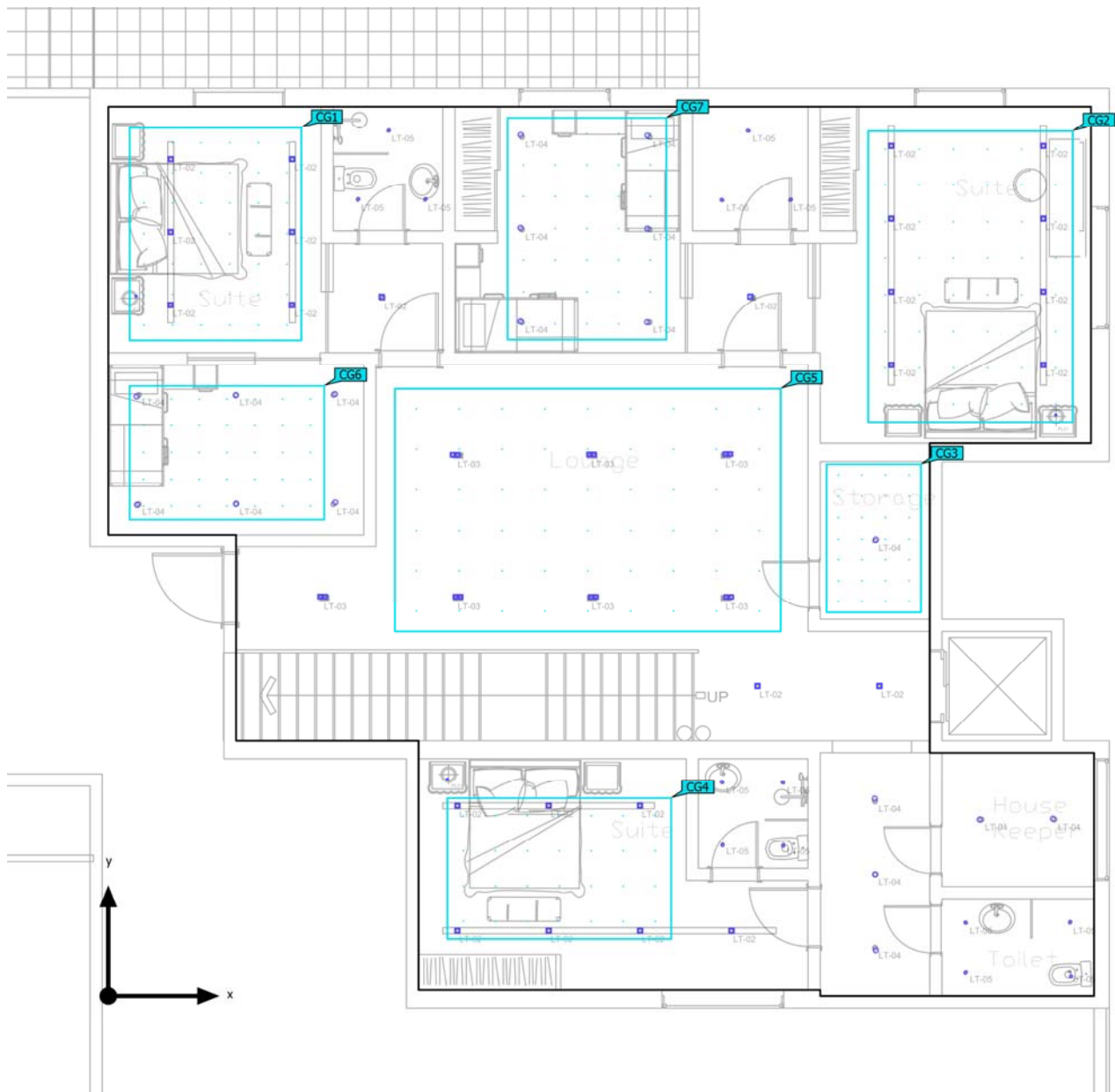
Utilisation profile: DIALux presetting (34.2 Standard (office))

Luminaire list

pcs.	Manufacturer	Article No.	Article name	R _{UG}	P	Φ	Luminous efficacy
25	NEKO	CLUB TSA3 M3 13W 35°3000K BBM	LED-SpotLight	–	13.0 W	700 lm	53.8 lm/W
3	NEKO	LED CLLE 8W-3000K/ 120°	LED-Lamps	–	8.0 W	800 lm	100.0 lm/W
14	NEKO	MINUX 44 WC 11W 40°3000K	LED-SpotLight	16	11.0 W	850 lm	77.3 lm/W
18	NEKO	TAKEO T75 13W-3000 K WW 50° 850lm	LED-Downlight	–	13.0 W	850 lm	65.4 lm/W
7	NEKO	TSA1D 2×15W BB 3000K 60°	LED-Multiple DownLight	–	30.0 W	2000 lm	66.7 lm/W

Building 1 (Light scene 1)

Calculation objects



Building 1 (Light scene 1)

Calculation objects

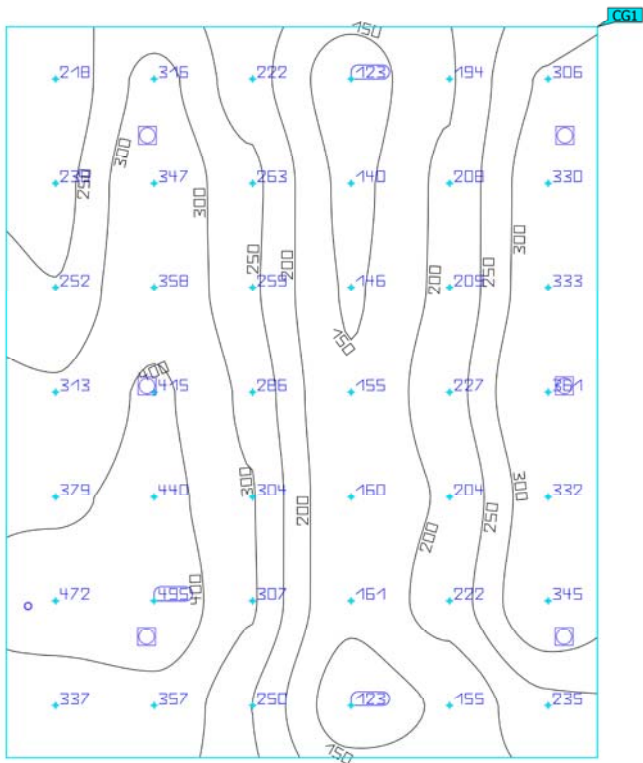
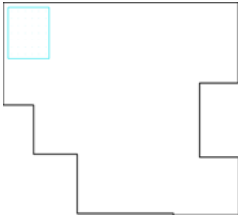
Calculation surfaces

Properties	\bar{E}	E_{min}	E_{max}	$U_o (g_1)$	g_2	Index
SUITE 01 Perpendicular illuminance Height: 0.850 m	274 lx	123 lx	495 lx	0.45	0.25	CG1
SUITE 02 Perpendicular illuminance Height: 0.850 m	219 lx	61.7 lx	409 lx	0.28	0.15	CG2
STORAGE Perpendicular illuminance Height: 0.850 m	141 lx	42.5 lx	251 lx	0.30	0.17	CG3
SUITE 03 Perpendicular illuminance Height: 0.850 m	219 lx	108 lx	430 lx	0.49	0.25	CG4
LOUNGE Perpendicular illuminance Height: 0.000 m	252 lx	164 lx	300 lx	0.65	0.55	CG5
Bedroom 01 Perpendicular illuminance Height: 0.850 m	272 lx	218 lx	310 lx	0.80	0.70	CG6
Bedroom 02 Perpendicular illuminance Height: 0.850 m	248 lx	158 lx	309 lx	0.64	0.51	CG7

Utilisation profile: DIALux presetting (34.2 Standard (office))

Building 1 (Light scene 1)

SUITE 01

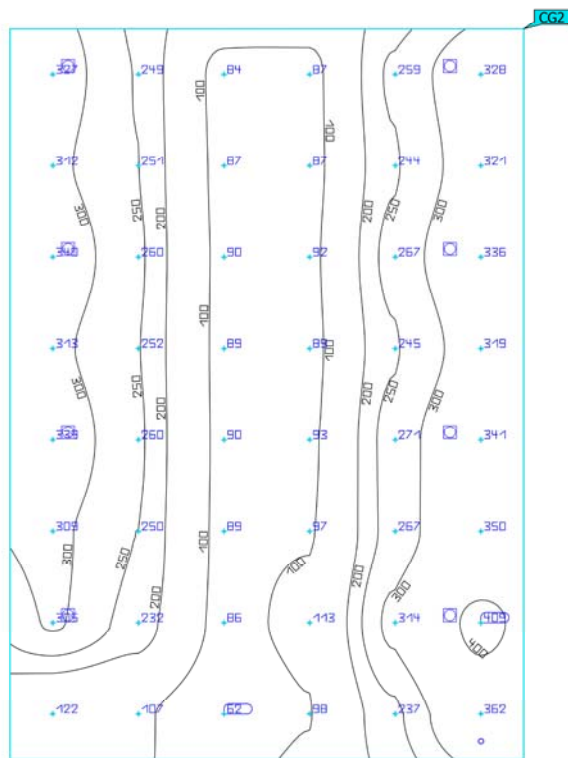
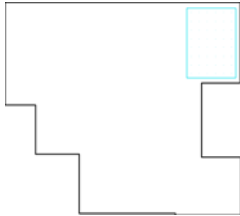


Properties	\bar{E}	E_{min}	E_{max}	$U_o (g_1)$	g_2	Index
SUITE 01 Perpendicular illuminance Height: 0.850 m	274 lx	123 lx	495 lx	0.45	0.25	CG1

Utilisation profile: DIALux presetting (34.2 Standard (office))

Building 1 (Light scene 1)

SUITE 02

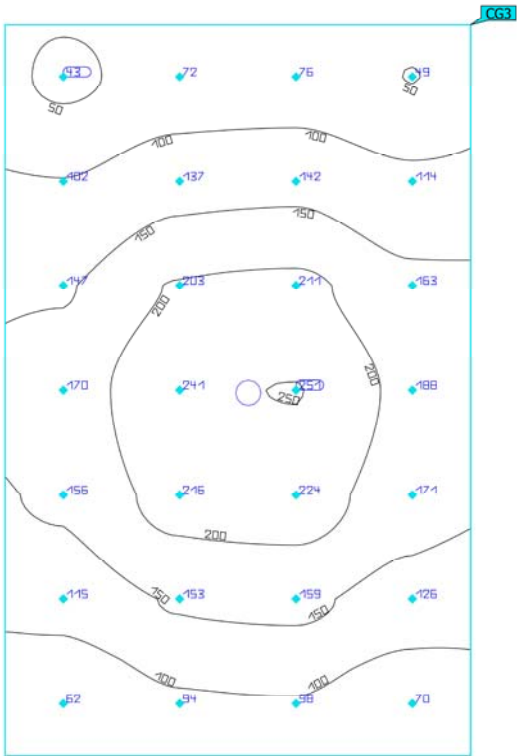
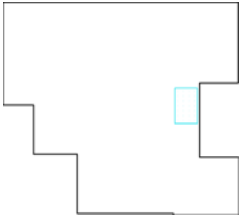


Properties	\bar{E}	E_{min}	E_{max}	$U_o (g_1)$	g_2	Index
SUITE 02 Perpendicular illuminance Height: 0.850 m	219 lx	61.7 lx	409 lx	0.28	0.15	CG2

Utilisation profile: DIALux presetting (34.2 Standard (office))

Building 1 (Light scene 1)

STORAGE

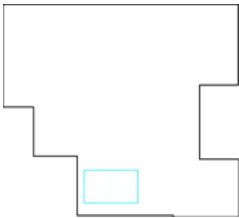


Properties	\bar{E}	E_{min}	E_{max}	$U_o (g_1)$	g_2	Index
STORAGE Perpendicular illuminance Height: 0.850 m	141 lx	42.5 lx	251 lx	0.30	0.17	CG3

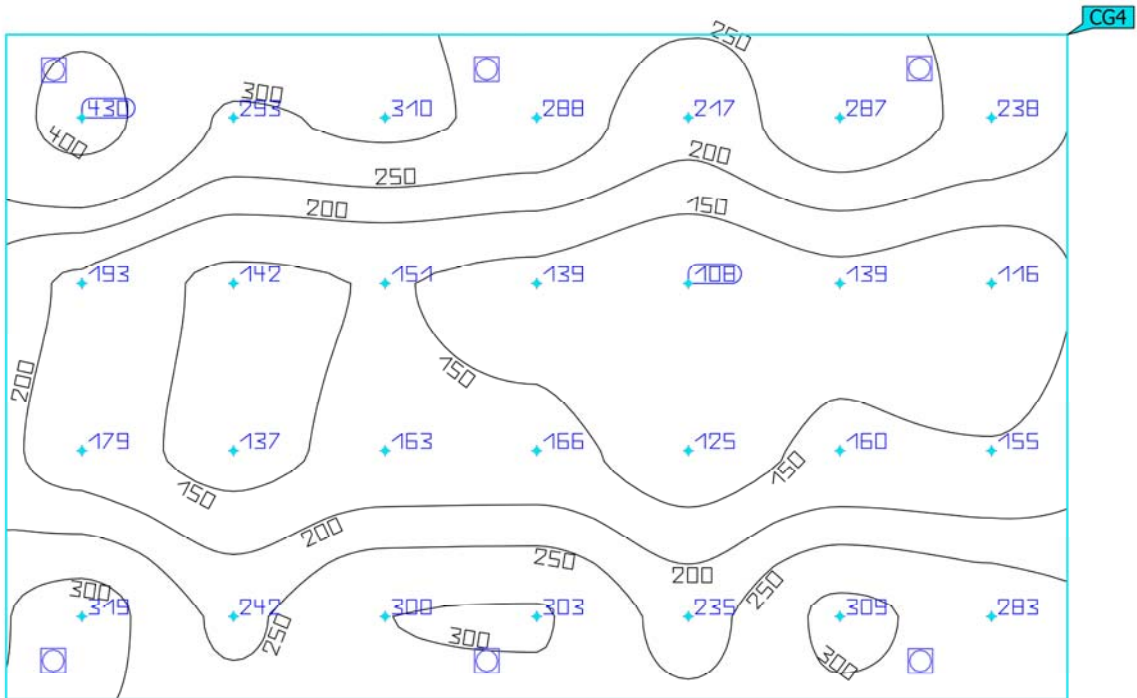
Utilisation profile: DIALux presetting (34.2 Standard (office))

Building 1 (Light scene 1)

SUITE 03



o

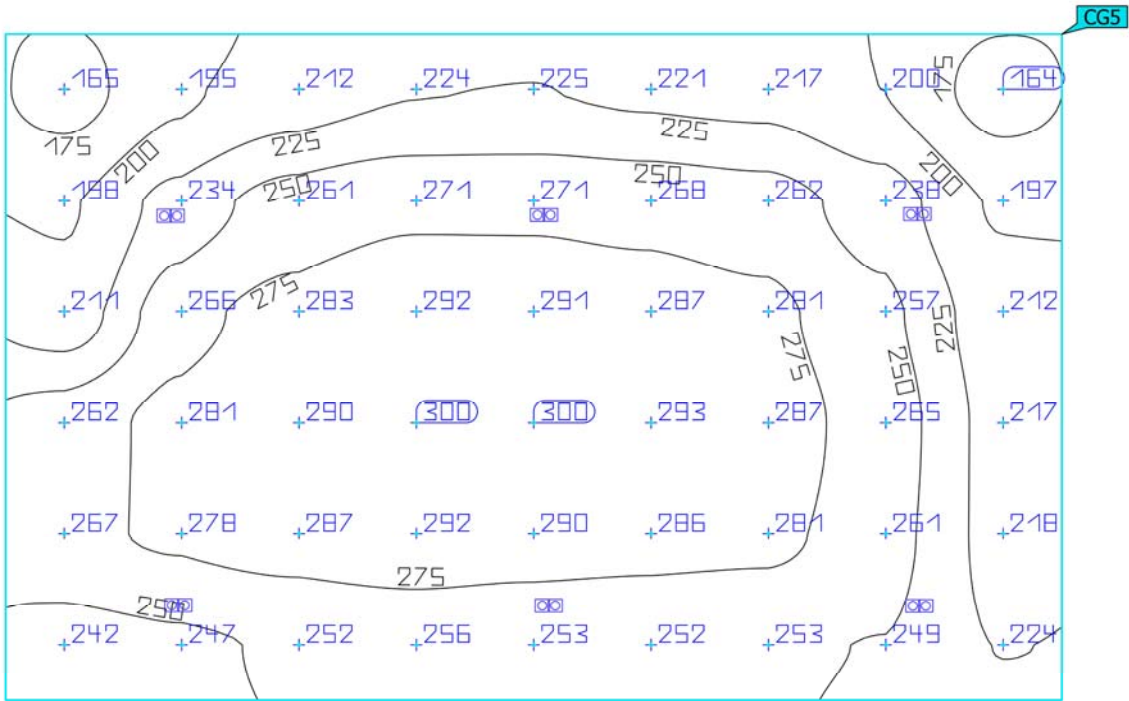
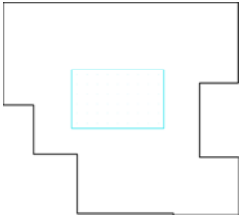


Properties	\bar{E}	E_{min}	E_{max}	$U_o (g_1)$	g_2	Index
SUITE 03 Perpendicular illuminance Height: 0.850 m	219 lx	108 lx	430 lx	0.49	0.25	CG4

Utilisation profile: DIALux presetting (34.2 Standard (office))

Building 1 (Light scene 1)

LOUNGE

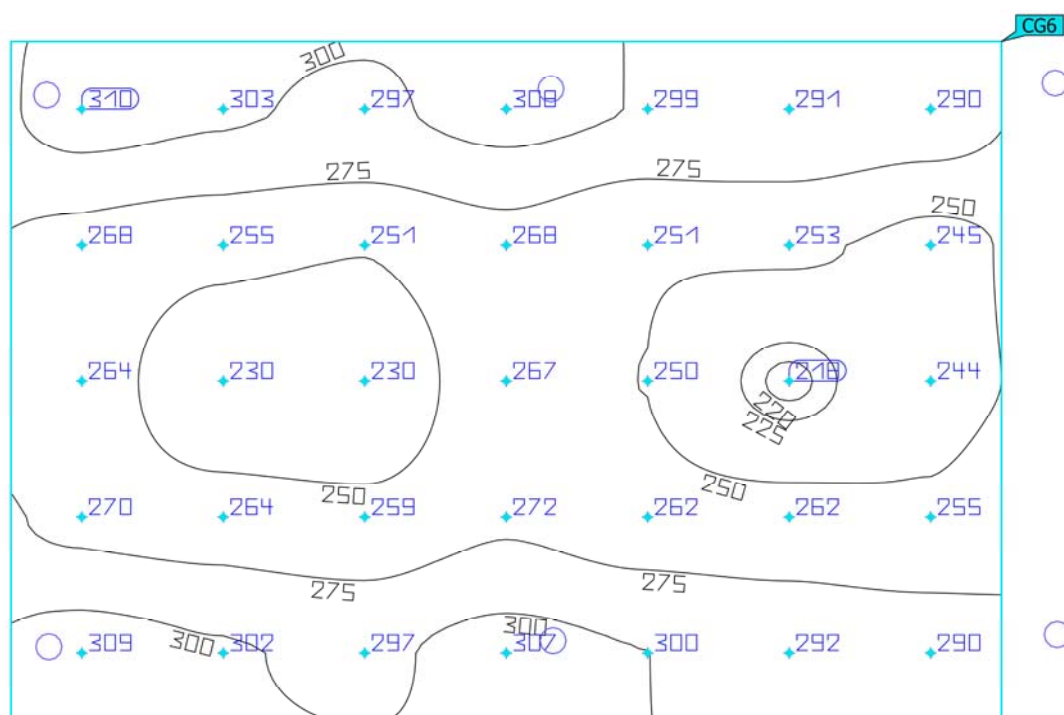
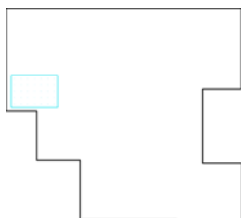


Properties	\bar{E}	E_{min}	E_{max}	$U_o (g_1)$	g_2	Index
LOUNGE Perpendicular illuminance Height: 0.000 m	252 lx	164 lx	300 lx	0.65	0.55	CG5

Utilisation profile: DIALux presetting (34.2 Standard (office))

Building 1 (Light scene 1)

Bedroom 01

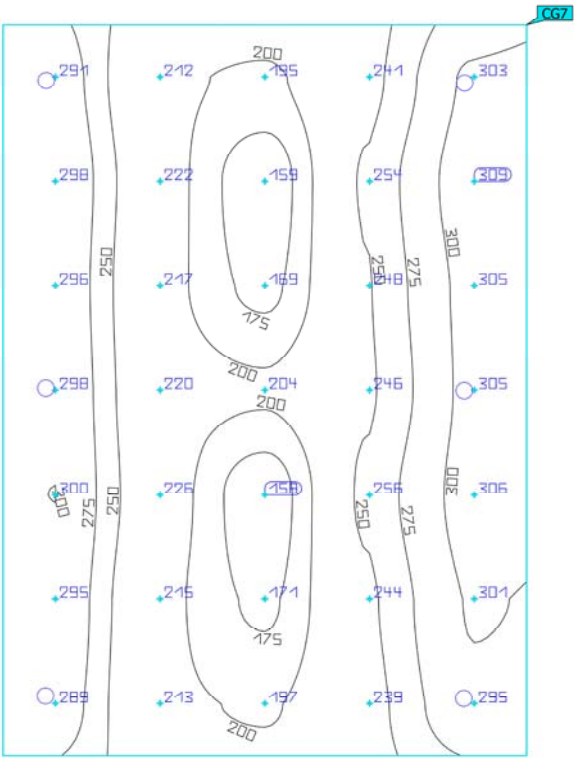
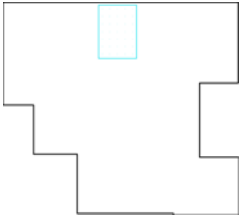


Properties	\bar{E}	E_{min}	E_{max}	$U_o (g_1)$	g_2	Index
Bedroom 01 Perpendicular illuminance Height: 0.850 m	272 lx	218 lx	310 lx	0.80	0.70	CG6

Utilisation profile: DIALux presetting (34.2 Standard (office))

Building 1 (Light scene 1)

Bedroom 02



Properties	\bar{E}	E_{min}	E_{max}	$U_o (g_1)$	g_2	Index
Bedroom 02 Perpendicular illuminance Height: 0.850 m	248 lx	158 lx	309 lx	0.64	0.51	CG7

Utilisation profile: DIALux presetting (34.2 Standard (office))